


SAY SKIN
AURORA-*lite*

SAY SKIN AURORA-lite
USER GUIDE

10 minutes a day!
Stay beautiful forever
with **SAY SKIN**


SAY SKIN is
the premium beauty care device brand.

SAY SKIN cares for your skin
to help you maintain your beauty forever.

Stay beautiful forever with SAY SKIN.

TABLE OF CONTENTS

-
- Product Benefits and Features
 - Components
 - Description of the Device
 - Operating Instructions
 - Charging
 - FAQ (Frequently Asked Questions)
 - Care and Safety Instructions
 - Specifications
 - Warranty

• Product Benefits and Features



Wrinkle Treatment & Skin Tightening

Helps tighten skin and reduces wrinkles.



Skin tone up / Whitening

Improves dull complexion and skin blemishes and provides a strong skin whitening effect.



Trouble Care

Solves problems of skin irritation caused by exposure to pollutants, such as fine dust, once and for all.



Promotes absorption of cosmetics

Boosts the absorption of effective ingredients of skin care products to provide strong protection for the dermis.



Safe & Eco-Friendly Material "Zirconia" Head

The eco-friendly material that is used for artificial teeth and jewelry.

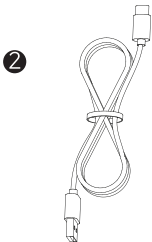
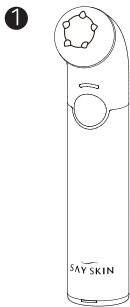


One simple click to operate

Convenient and simple User Interface design to operate power and levels with just one-click button.

• Components

- Pictures of components may differ from the actual product, and some items are subject to change.



3



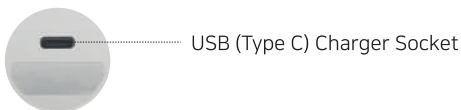
1. The main body of the device
2. USB Charging Cable (Type C)
3. User Manual

• Description of the Device

Front



Bottom



• Operating Instructions

1. Tone your facial skin after cleansing.



Make sure to pat your face dry before using the product as remaining water may make your skin irritated.

2. Press and hold the On/Off button for 2 seconds.

The LED On/Off & level indicator lights up Level 1 (orange color LED).

3. Press the On/Off & Level button to choose the level (from 1 to 2) you want.

- Please use 5-10 minutes for one use.
- When using, it may sting depending on the sensitivity of the skin. On your first use, start with Level 1 (orange color LED), and then use it with Level 2.

[Switch it On/Off]



Press On/Off & Level button for 2 seconds

[Select Level]

Press On/Off & Level button shortly after the power has been turned on. Each time you press the button, the level will go up. If you press the button at Level 2, it will go back to Level 1.



Level 1

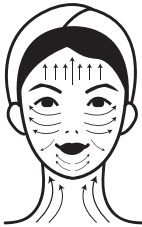


Level 2

LED	Status
Orange Color	Level 1
Red Color	Level 2

• Operating Instructions

4. Gently put the device on the area you want and move the device as if you scanned your face with it following your skin texture from bottom to top.



※ When using the device on your neck, avoid using it around the Adam's apple where the thyroid gland is located. If you have any thyroid gland disease, please consult your doctor before using the device.

5. The device will turn off automatically after 10 minutes of use.

If your hand does not properly touch the handle, the device would produce less plasma, undermining the effectiveness of the product.

6. When you want intensive care

Apply repeatedly to the desired area for intensive care, such as forehead, cheeks, and eye area.

(Caution! Do not use for long time when apply intensive care to one area.)

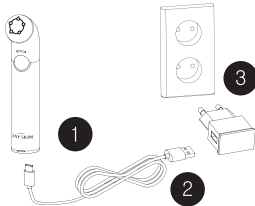
[Recommendations for using the device]

It is recommended to use this device without applying cosmetics. However, if your skin is too dry to rough, there is no problem even if you use the device after properly applying cosmetics you have, such as moisture cream, so please note this.

● Charging

※ Be sure to use 5V standard mobile phone charger for family use.

- Charging with a high-speed charger that charges at a high voltage (9V or higher) may cause product failure.
- Warranty service does not be applied to the damage caused by misuse.



1. Connect the USB cable (C type) to the main body of the device.
2. Connect the USB cable (C type) to a 5V standard mobile phone charging adapter.
3. Plug the charging adapter into an outlet.

- Full charging time : About 80 minutes (1 hour 20 minutes)
- ◎ Operating time after full charging : about 60 minutes (1 hour)

※ However, the charging time and usage time may differ according to the battery level, ambient temperature, or charging conditions.
The device will not work while charging.

▶ LED colors when charging

LED	Status
Blinking Red	Low battery
Red	Charging in progress
Green	Fully charged



- After purchasing the product, please charge it fully before using it for the first time.
- If the device is left uncharged for a long period of time, it may cause shortening of battery life. Therefore, periodic charging is recommended at least every six months.
- If the device is used with the battery discharged significantly, the product may not operate without a battery warning sign. In this case, it is not a product failure, please use it again after charging.

● FAQ (Frequently Asked Questions)

1. Can I use the device several times a day on a daily basis?

It is recommended to use the device for 5 to 10 minutes for each area, 2 to 3 times per day. This recommended time of use is for average healthy skin. Please adjust the time of use and level if you have sensitive skin.

※ For sensitive skin: It is recommended to use the device at Level 1 several times until your skin gets used to it completely and raise the level gradually

2. It smells while using the product. Is this okay?

AURORA-lite generates ions by generating plasma in the air, which may have a slight odor due to collision between ions. It is a natural phenomenon that occurs when plasma is generated, so please use it without worry.

3. There is a crackling sound while using the product. Is this okay?

This is the sound generated when the product operates normally and plasma is generated between the head and the skin.

4. Can I use the product while charging?

The product does not work while charging.

5. When I use the device with cosmetics, when should I use the cosmetics?

If possible, it is recommended to apply cosmetics after using the device.

However, if your skin condition is too dry to rough, you can use the device after applying the appropriate amount of cosmetics, such as moisture cream.

● Care and Safety Instructions

1. Precautions for safety

※ Damage caused by negligence is not compensated.

2. Be sure to familiar with the following matters.

◆ **Patients with the following symptoms or those who are in any of the following conditions, should be consulted with a doctor before use.**

- 1) People who have a skin rash or feel excessive tingling
- 2) People who need health care such as pregnant or menstruating women, or undergoing regular hospital treatment
- 3) People with allergic diseases, whose skin is overly sensitive
- 4) People who have excessive inflammation due to the acne.

◆ **Users of the following medical device cannot use this device.**

- 1) Users of electronic medical devices inserted directly into the body, such as pacemakers
- 2) Users of life-sustaining electronic medical devices such as cardiopulmonary devices
- 3) Users of mounted electronic medical devices such as electrocardiogram devices

◆ **Please note that the following may be dangerous.**

- Do not use it for any purpose other than its intended purpose. It can cause an accident.
- When using this device on the neck, avoid the Adam's apple where the thyroid gland is located and do not put it in your mouth or use it directly on your eyes.
- If you have sensitive skin, some contactable trouble may occur. If this symptom occurs, stop for 2-3 days and use it again.
- When using this device with wearing earphones and headphones, avoid contact with them. If this device contacts with earphones and headphones, it may cause noise or damage them.
- If the head of the main body is broken or cracked, there is a risk of burns and skin damage. Stop using it immediately.
- Do not store or use in a hot and humid place such as a jjimjilbang (Korean dry sauna) or a toilet.
- Do not plug or unplug the charger with wet hands. It may cause electric shock
- Please refrain from using the product in the same area for a long time. If you feel any problem with the device during use, stop using it immediately, turn the power off, and contact the place of purchase.
- Be careful that this product may cause malfunction when it contact other electrical products.
- In case of thunderstorm, stop charging and disconnect the charger from the outlet.

● Care and Safety Instructions

2. Precautions for storage

- After using the device, wipe the head and body with a wet wipes or soft cloth for store it. Do not keep in the place with high humidity or temperature, or dust, direct sunlight, or where magnetic or electromagnetic waves are generated.
- Keep the product out of reach of infants, children and the elderly with dementia, and away from pets.
- Don't immerse the product in water.
- Free A/S is unavailable for product failures due to user negligence.
- If the device is left uncharged for a long period of time, it may cause shortening of battery life. Therefore, periodic charging is recommended at least every six months.

◆ Be sure to familiar with the following informations regarding warranty details.

- Consumables, excluding the device, are not covered under warranty.
- Exchange or refund of this product is only possible within 7 days from the date of purchase if there is a problem with the product.
- The warranty period for free A/S of this product is one year from the date of purchase, and the customer may be charged for repairs, etc. due to customer negligence.

◆ Be sure to familiar with the following informations when performing maintenance checks.

- Do not disassemble this device discretionaly. You will not be able to receive an A/S if you arbitrarily disassemble it at home.
- In case of faults, please stop using it and contact the place of purchase.
- Do not drop the device from high place or give a strong impact. In this case, be sure to be inspected before use.
- Since the precision parts are built-in, dropping or impacting the product may damage the device and cause failure.

- Specifications

Brand Name	SAY SKIN
Model Name	AURORA-lite
Efficacy & Effectiveness	Skin care
Power Supply	DC 5V, 1A (USB-Type C)
Material	BODY : Aluminum, PC+ABS, PP HEAD : Zirconia
Size	30.3(W) x 155(L) x 52(H) mm
Weight	103 g
Manufacturer	Withnix Co., Ltd.
Country of Origin	Republic of Korea

● Warranty

Full One Year Warranty.

Brand name	
Product/Model Name	
Wholesaler	
Serial No.	
Retailer	
Customer Name	
Address	

※ You should present this warranty including the date of purchase when requesting a repair to get service.d.

※ This warranty is valid only in the Republic of Korea. Please keep this warranty carefully as it cannot be reissued.

- ① SAY SKIN warrants the product according to the Consumer Damage Compensation Regulation by item (Ministry of Finance and Economy Public Notification No. 2006-36).
- ② Call customer service to request a repair or service, and call the retailer to request return.
- ③ Eligibility for compensation and compensation details will be notified within 7 days of request, and compensation will be made within 14 days of notice.
- ④ Free warranty covers any failure caused by defects in product performance or functions that occur under normal operating conditions within the warranty period, and if the defect is beyond a repair the product will be replaced. (* From three months after the date of purchase, the consumer is responsible for the cost of shipping the product for service or a repair).
- ⑤ Free warranty service does not apply to the following:
 - Any failure caused by the consumer's willful misconduct or negligence.
 - Any failure caused by problems with power supply or defective connecting devices.
 - Other failures caused by external factors other than defects of the product itself.
 - Defects in performance or functions and failure that occur after the warranty expires.
 - Failures caused by natural disasters - Failures that result from repairs performed by someone other than SAY SKIN service centers or authorized agencies.
- ⑥ If the product is not defective, the expenses of repairs may be charged to you. Therefore, read this instruction carefully before using the product.

- MEMO

SAY SKIN

Website : www.say-skin.com

Copyright©2020 Withnix Co., Ltd. All Rights Reserved.

The logo of SAY SKIN is a registered trademark of Withnix

MADE IN KOREA

If there is a problem or a fault with the product, please contact the customer service center.

You can get faster service if you are aware of the model name and the fault condition of the product before you call.

This is a skin care device, not a medical device.

There are no medical effects and efficacy

other than cosmetic effects in relation to product functions.